

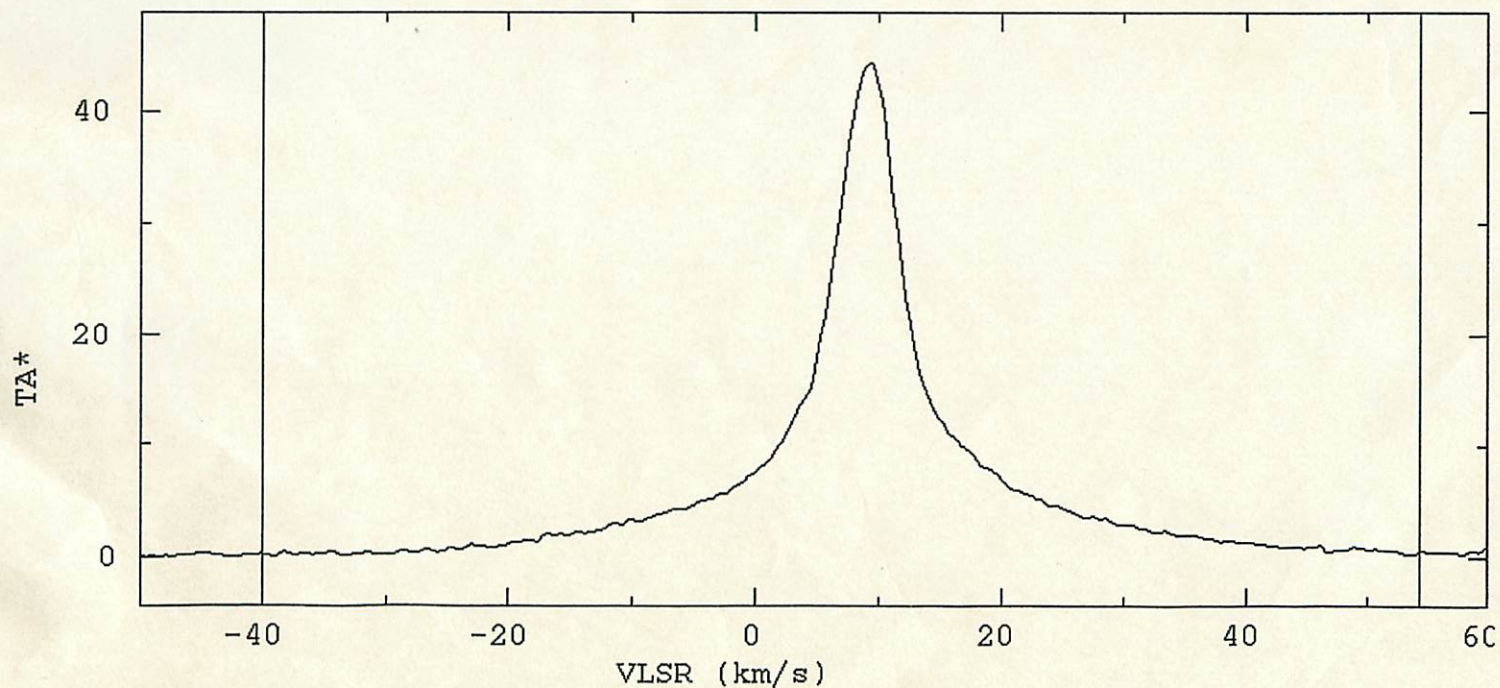
ORI-IRC2

Comments CO(1-0)
 Spectrum-id = 00001
 Ref. coordinate = RA,DEC
 X offset = +00d00'00.0"
 Y offset = +00d00'00.0"
 Center freq. = 115.271204(GHz)
 r.m.s = 0.140(K)
 Baseline order = 01

ORIVIII

: DATE(M D Y) = 01 12 90
 : P.A. = 0.000d
 : RA = +05h32m47.0s⁽⁸¹⁹⁵⁰⁾ : l = 208.993D
 : DEC = -05d24'23.0" : b = -19.384D
 : AOS-W
 : Integ time = 00h10m20s
 : Scaling factor = 1.00

no.	peak T		x of peak		half width		integ. int.
1	44.433[K]	1025.0[ch]	115271.078[MHz]	9.322 [km/s]	20.303[ch]	2.538 [MHz]	6.601 [km/s] 557.519 [K*km/s]



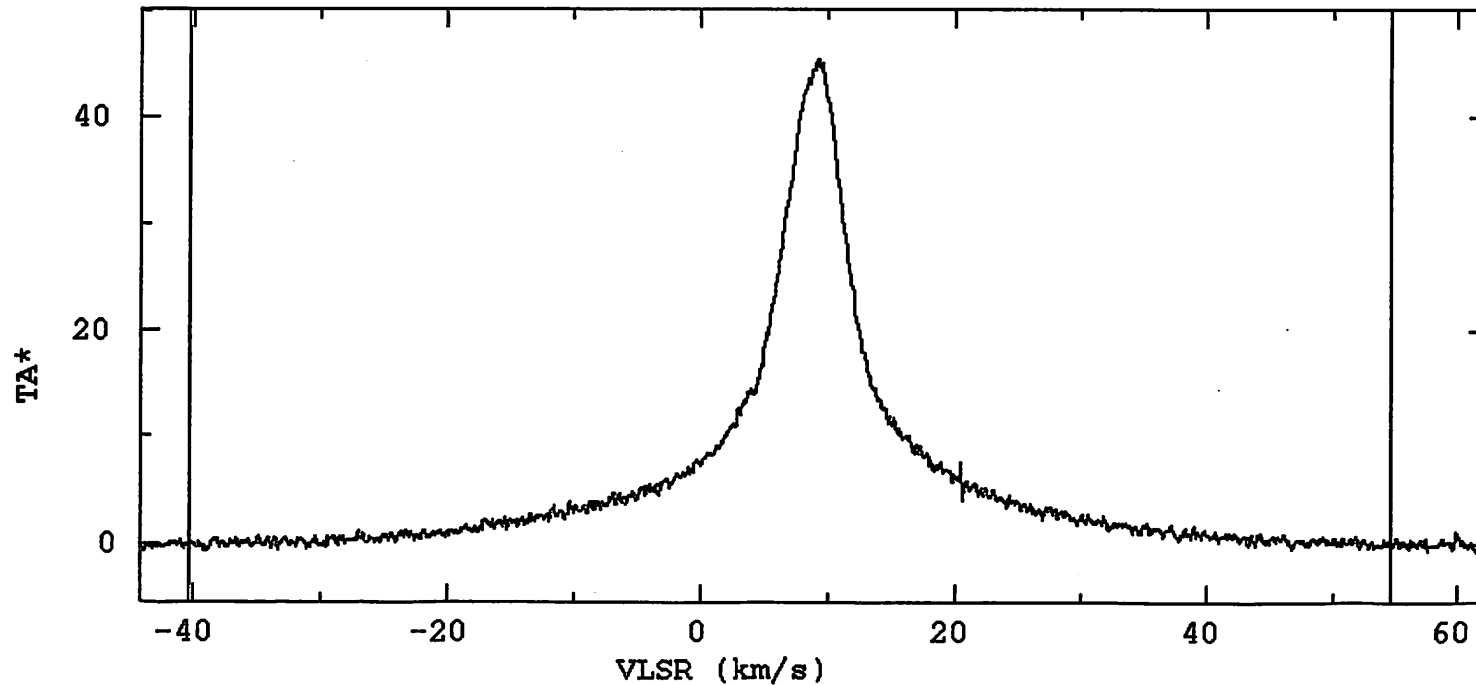
ORI-IRC2

Comments CO(1-0)
 Spectrum-id = 00002
 Ref. coordinate = RA,DEC
 X offset = +00d00'00.0"
 Y offset = +00d00'00.0"
 Center freq. = 115.271204(GHz)
 r.m.s = 0.243(K)
 Baseline order = 01

ORIVIII

: DATE(M D Y) = 01 12 90
 : P.A. = 0.000d
 : RA = +05h32m47.0s : l = 208.993D
 : DEC = -05d24'23.0" : b = -19.384D
 : AOS-H
 : Integ time = 00h20m40s
 : Scaling factor = 1.00

no.	peak T		z of peak		half width		integ. int.
1	45.499[K]	1030.0[ch]	115271.086[MHz]	9.309 [km/s]	*****[ch]	2.443 [MHz]	6.354 [km/s] 528.325 [K*km/s]



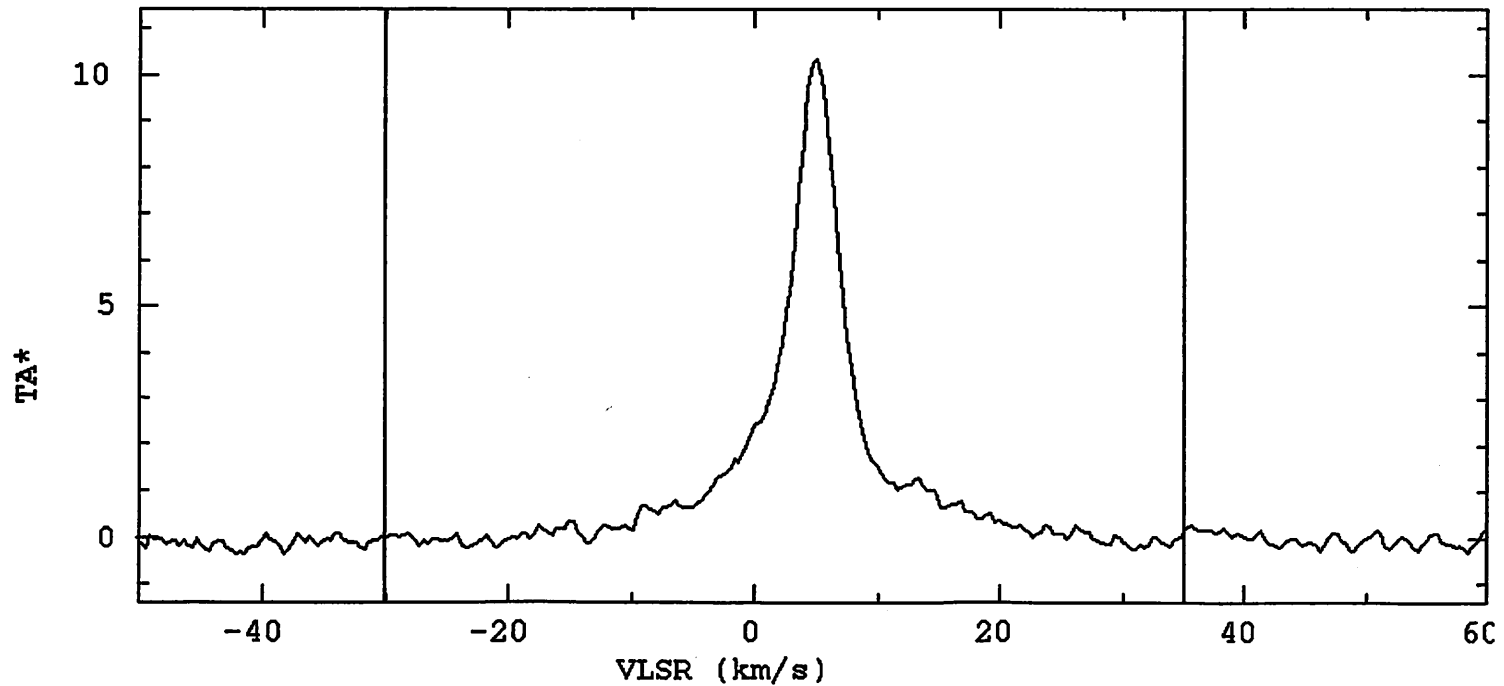
ORI-IRC2

Comments 13CO
Spectrum-id = 00003
Ref. coordinate = RA,DEC
X offset = +00d00'00.0"
Y offset = +00d00'00.0"
Center freq. = 110.201353(GHz)
r.m.s = 0.138(K)
Baseline order = 01

ORIVIII

: DATE(M D Y) = 01 15 90
: P.A. = 0.000d
: RA = +05h32m47.0s : l = 208.993D
: DEC = -05d24'23.0" : b = -19.384D
: AOS-W
: Integ time = 00h03m40s
: Scaling factor = 1.00

no.	peak T		x of peak		half width		integ. int.
1	10.344[K]	1023.0[ch]	110202.789[MHz]	5.090 [km/s]	12.650[ch]	1.613 [MHz]	4.388 [km/s] 74.078 [K*km/s]



ORI-IRC2

Comments 13CO

Spectrum-id = 00004

Ref. coordinate = RA,DEC

X offset = +00d00'00.0"

Y offset = +00d00'00.0"

Center freq. = 110.201353(GHz)

r.m.s = 0.223(K)

Baseline order = 01

ORIVIII

: DATE(M D Y) = 01 15 90

: P.A. = 0.000d

: RA = +05h32m47.0s

: DEC = -05d24'23.0"

: AOS-H

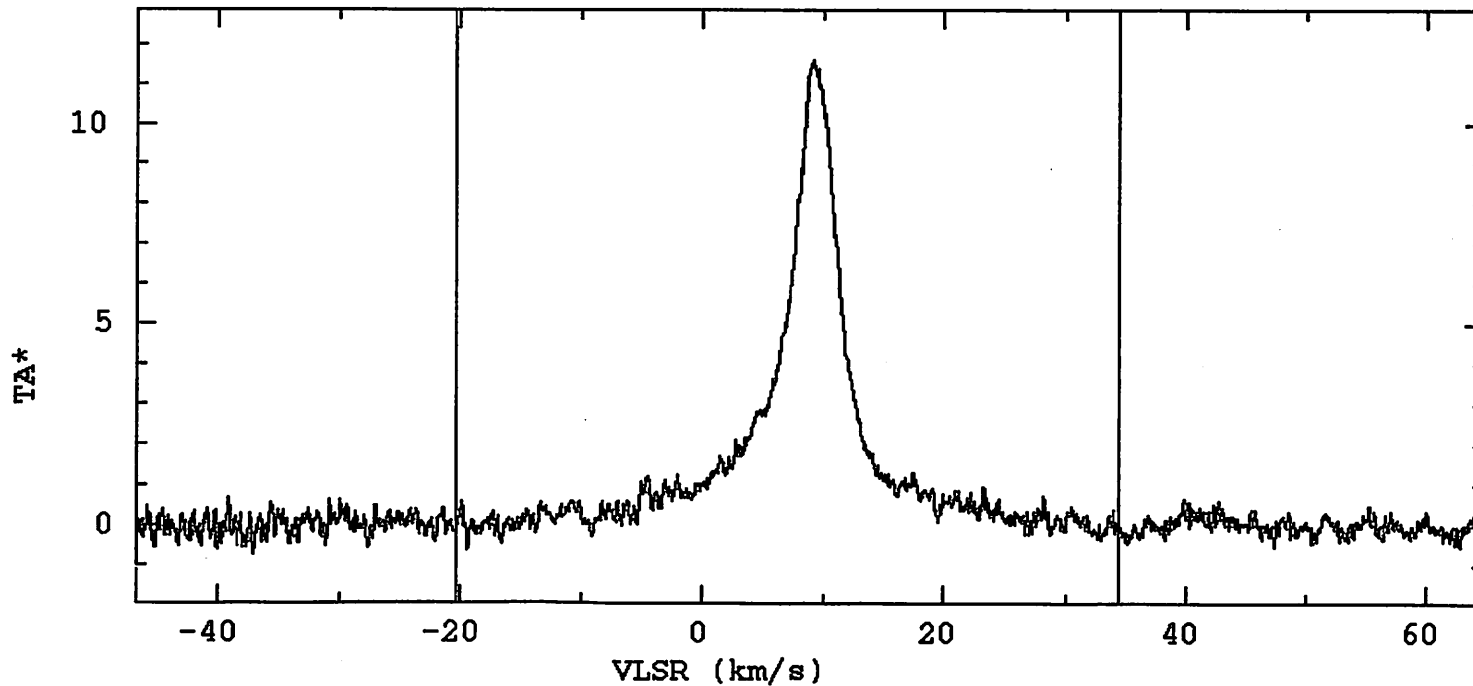
: Integ time = 00h07m20s

: Scaling factor = 1.00

: l = 208.993D

: b = -19.384D

no.	peak T		z of peak		half width		integ. int.
1	11.603[K]	1025.0[ch]	110201.336[MHz]	9.035 [km/s]	75.134[ch]	1.503 [MHz]	4.088 [km/s] 79.123 [K*km/s]



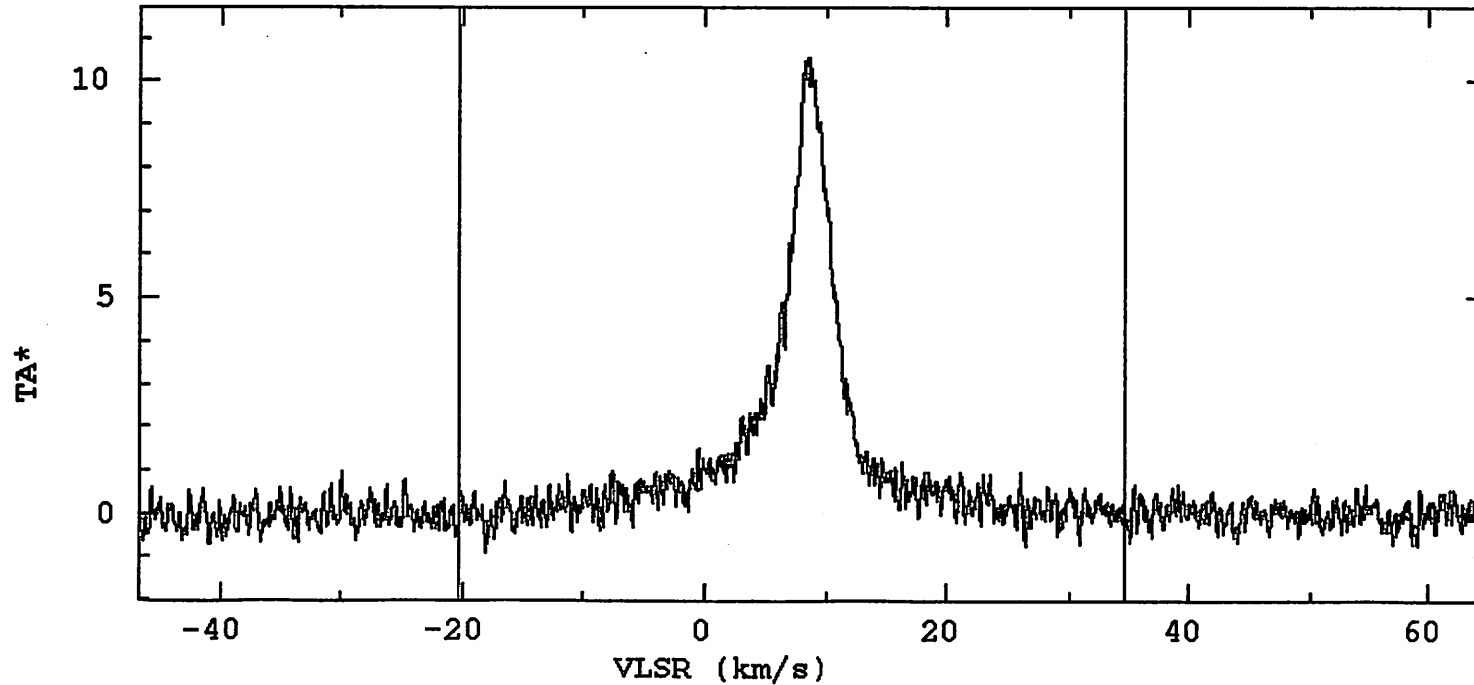
ORI-IRC2

Comments 13CO
 Spectrum-id = 00006
 Ref. coordinate = RA,DEC
 X offset = +00d00'00.0"
 Y offset = +00d00'00.0"
 Center freq. = 110.201353(GHz)
 r.m.s = 0.269(K)
 Baseline order = 01

ORIVIII

: DATE(M D Y) = 01 15 90
 : P.A. = 0.000d
 : RA = +05h32m47.0s : l = 208.993D
 : DEC = -05d24'23.0" : b = -19.384D
 : AOS-H
 : Integ time = 00h07m20s
 : Scaling factor = 1.00

no.	peak T		x of peak		half width		integ. int.
1	10.550[K]	1013.0[ch]	110201.578[MHz]	8.382 [km/s]	67.737[ch]	1.355 [MHz]	3.686 [km/s] 66.184 [K*km/s]



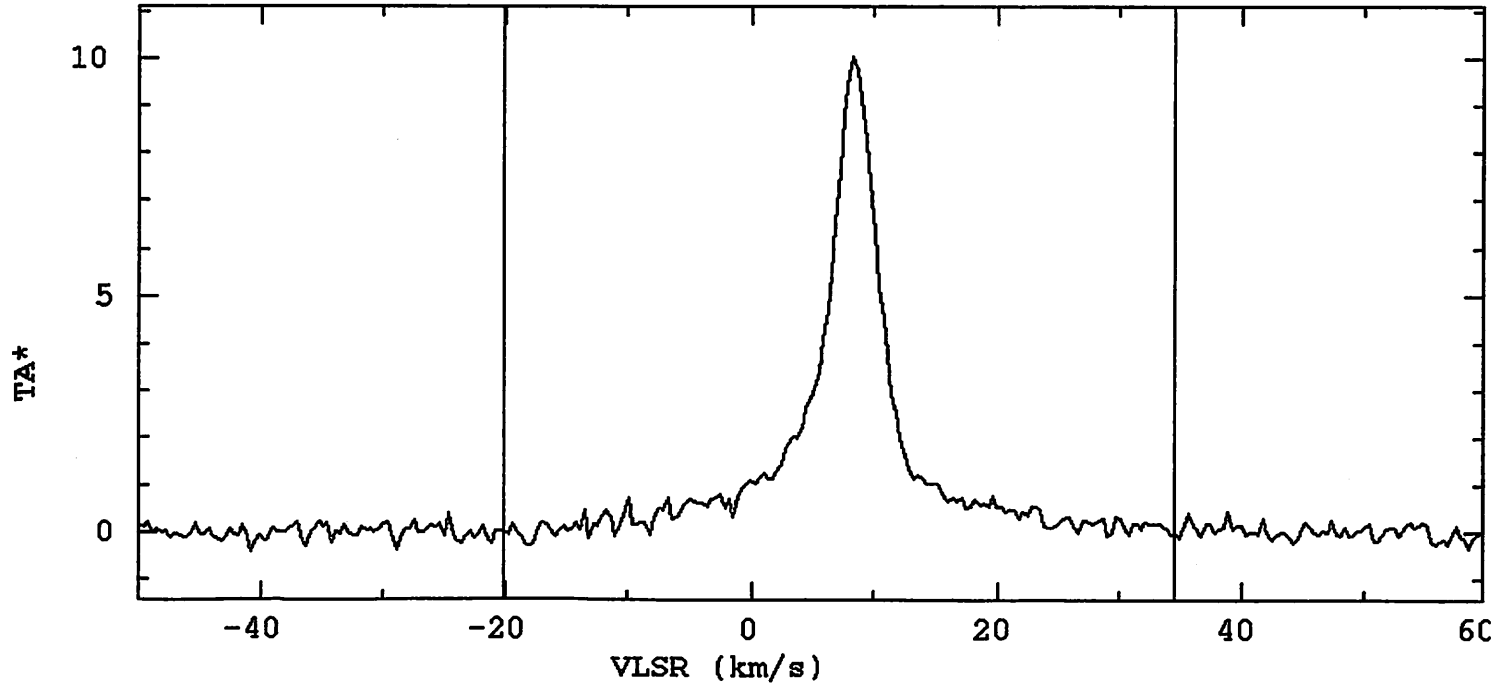
ORI-IRC2

Comments 13CO
 Spectrum-id = 00005
 Ref. coordinate = RA,DEC
 X offset = +00d00'00.0"
 Y offset = +00d00'00.0"
 Center freq. = 110.151353(GHz)
 r.m.s = 0.178(K)
 Baseline order = 01

ORIVIII

: DATE(M D Y) = 01 15 90
 : P.A. = 0.000d
 : RA = +05h32m47.0s : l = 208.993D
 : DEC = -05d24'23.0" : b = -19.384D
 : AOS-W
 : Integ time = 00h03m40s
 : Scaling factor = 1.00

no.	peak T		z of peak		half width		integ. int.
1	10.054[K]	1409.0[ch]	110201.570[MHz]	8.402 [km/s]	11.831[ch]	1.527 [MHz]	4.154 [km/s] 68.899 [K*km/s]



ORI-IRC2

Comments CS

Spectrum-id = 00007

Ref. coordinate = RA,DEC

X offset = +00d00'00.0"

Y offset = +00d00'00.0"

Center freq. = 98.030968(GHz)

r.m.s = 0.077(K)

Baseline order = 01

ORIVIII

: DATE(M D Y) = 01 14 90

: P.A. = 0.000d

: RA = +05h32m47.0s

: DEC = -05d24'23.0"

: AOS-W

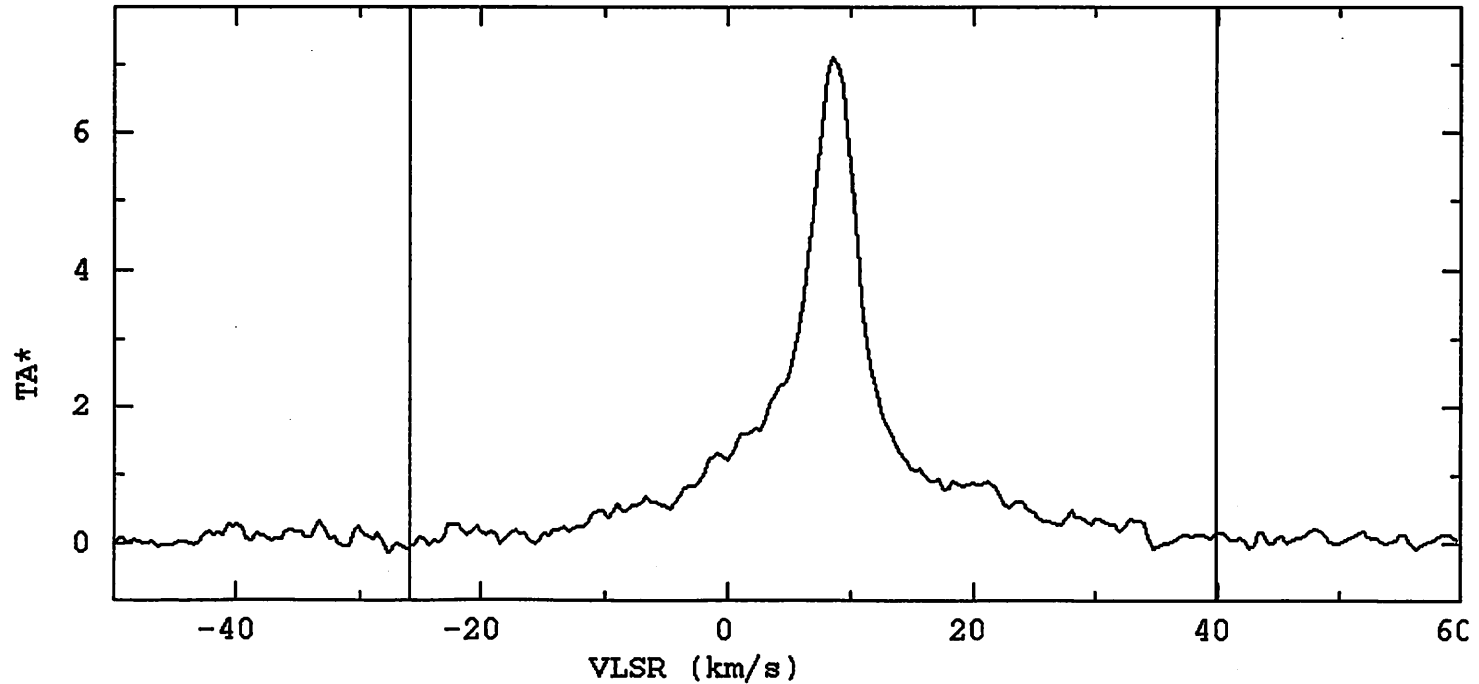
: Integ time = 00h10m20s

: Scaling factor = 1.00

: l = 208.993D

: b = -19.384D

no.	peak T		x of peak		half width		integ. int.
1	7.118[K]	631.0[ch]	97981.078[MHz]	8.648 [km/s]	12.195[ch]	1.557 [MHz]	4.763 [km/s] 68.029 [K*km/s]

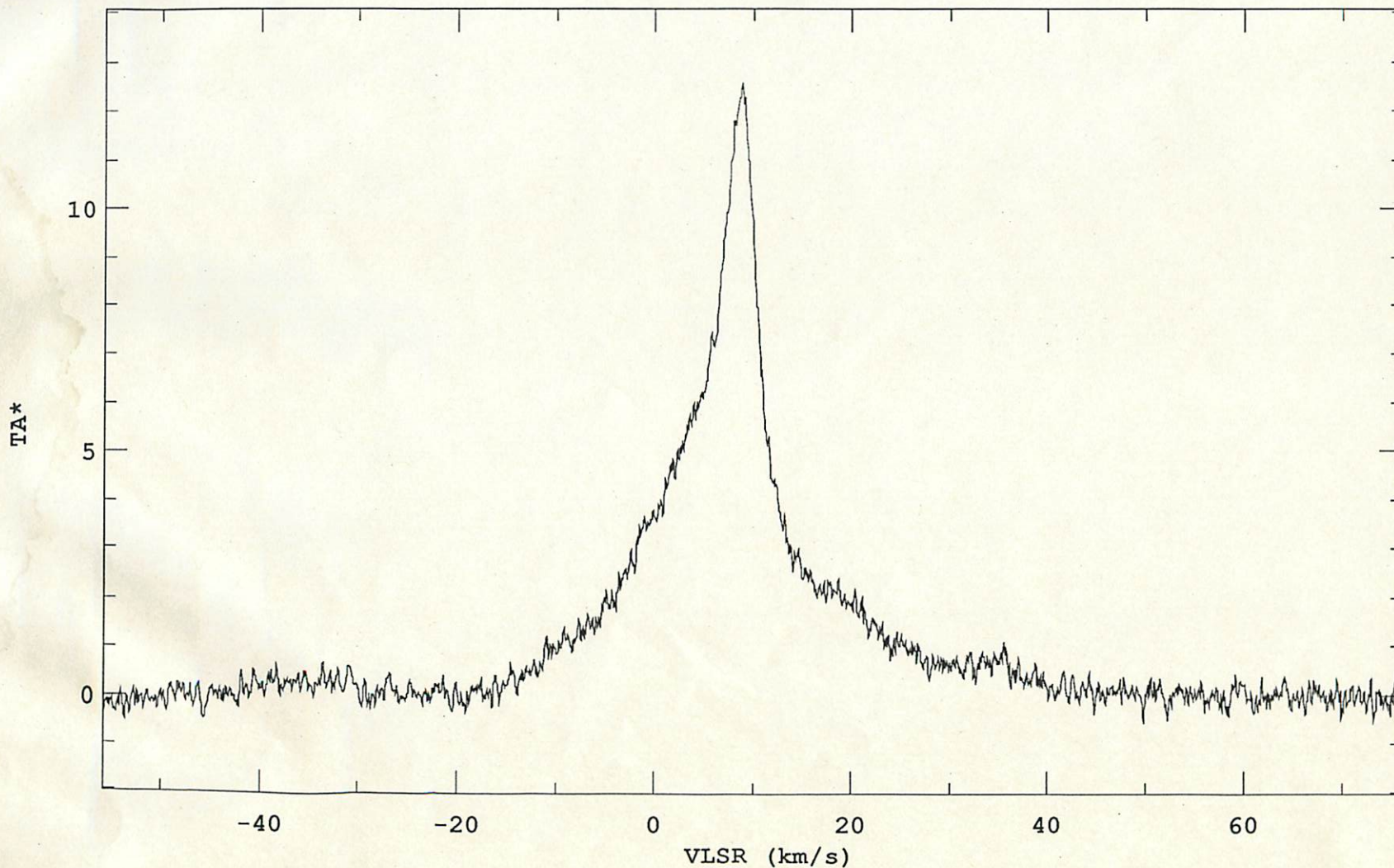


KLCAL ORI-KL
Comments
Spectrum-id = 00002
Ref. coordinate = RA, DEC
X offset = +00d00'00.0"
Y offset = +00d00'00.0"
Center freq. = 97.980968 (GHz)
r.m.s = 0.164 (K)
Baseline order = 01

KL310A
: DATE (M D Y) = 03 10 92
: P.A. = 0.000d
: RA = +05h32m47.0s : l = 208.993D
: DEC = -05d24'23.0" : b = -19.385D
: AOS-H3
: Integ time = 00h03m00s
: Scaling factor = 1.00

(S(2-1))

長谷川 也



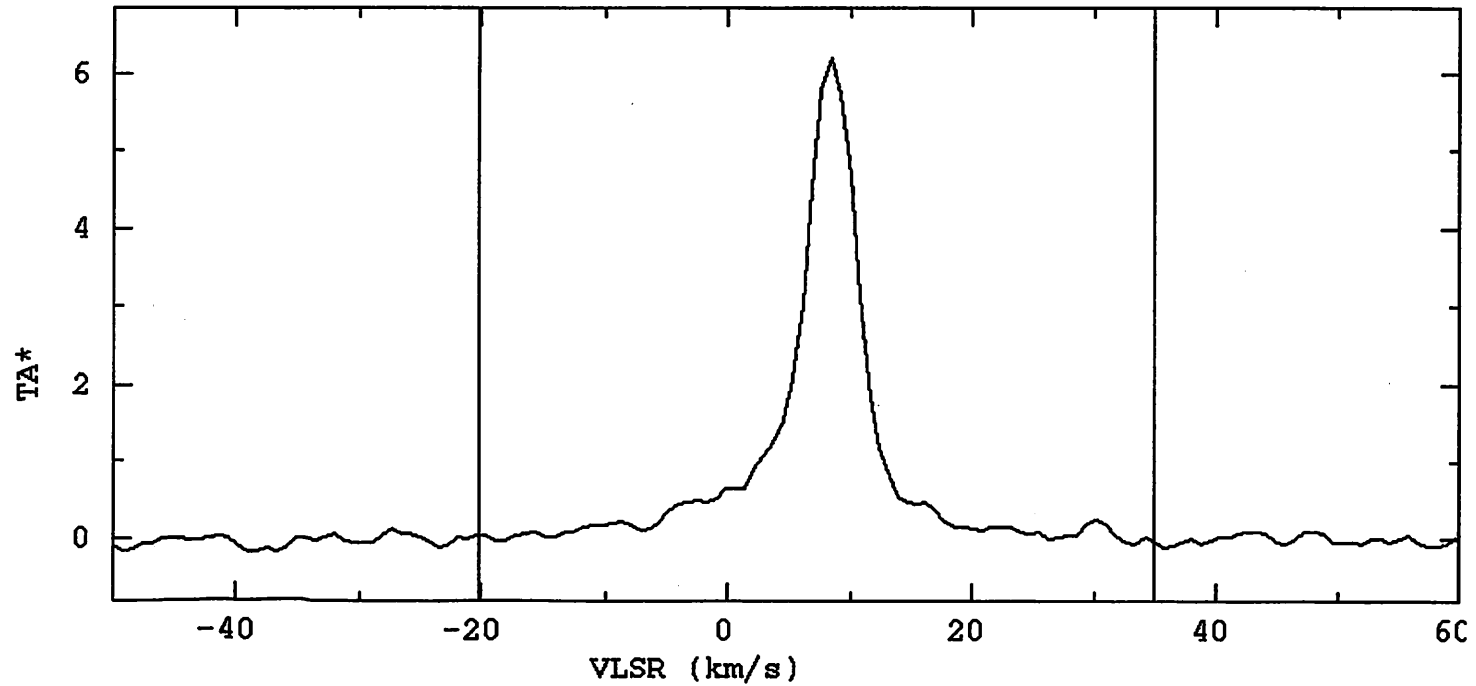
ORI-IRC2

Comments CS(1-0)
 Spectrum-id = 00009
 Ref. coordinate = RA,DEC
 X offset = +00d00'00.0"
 Y offset = +00d00'00.0"
 Center freq. = 49.015964(GHz)
 r.m.s = 0.066(K)
 Baseline order = 01

ORIVIII

: DATE(M D Y) = 01 14 90
 : P.A. = 0.000d
 : RA = +05h32m47.0s : l = 208.993D
 : DEC = -05d24'23.0" : b = -19.384D
 : AOS=W
 : Inteq time = 00h07m20s
 : Scaling factor = 1.00

no.	peak T		x of peak		half width		integ. int.
1	6.207[K]	825.0[ch]	48991.051[MHz]	8.491 [km/s]	5.964[ch]	0.758 [MHz]	4.638 [km/s] 43.185 [K*km/s]



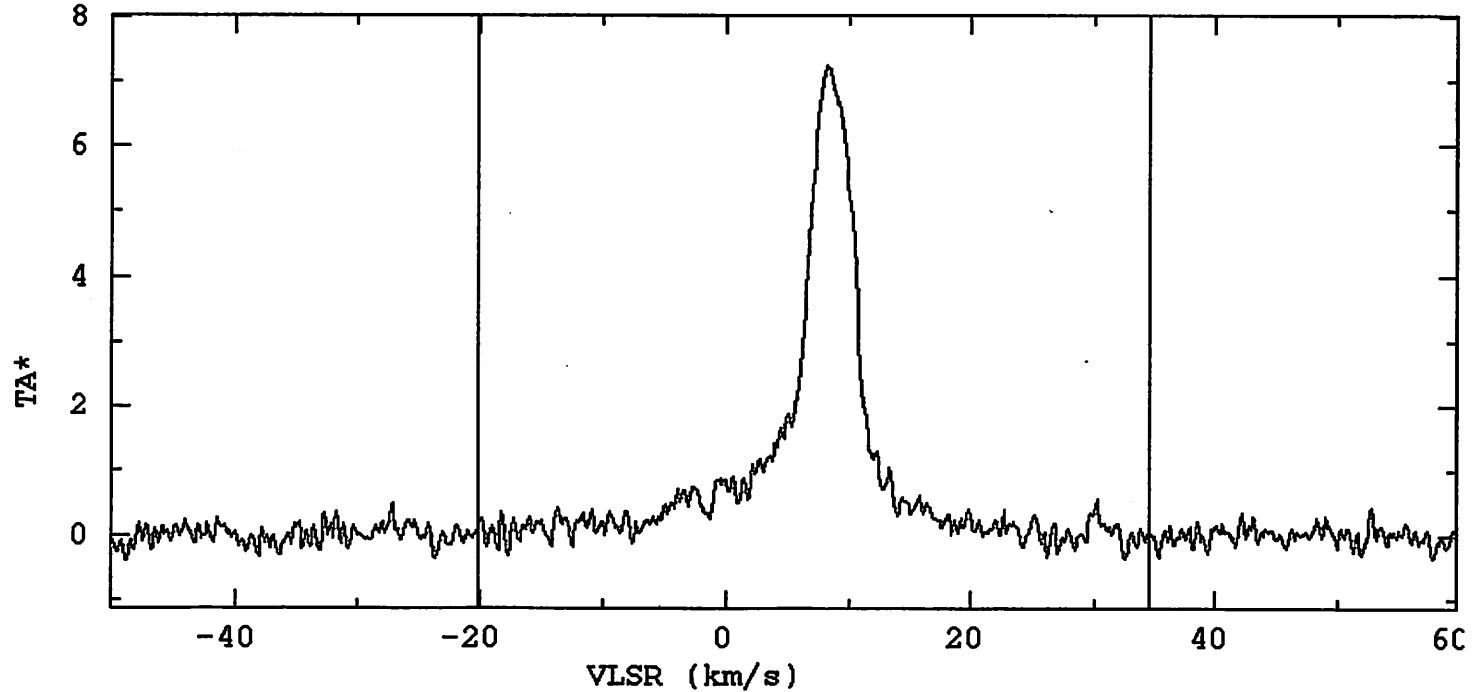
ORI-IRC2

Comments CS(1-0)
Spectrum-id = 00010
Ref. coordinate = RA,DEC
X offset = +00d00'00.0"
Y offset = +00d00'00.0"
Center freq. = 48.990964(GHz)
r.m.s = 0.143(K)
Baseline order = 01

ORIVIII

: DATE(M D Y) = 01 14 90
: P.A. = 0.000d
: RA = +05h32m47.0s : l = 208.993D
: DEC = -05d24'23.0" : b = -19.384D
: AOS-H
: Integ time = 00h14m40s
: Scaling factor = 1.00

no.	peak T		z of peak		half width		integ. int.
1	7.250[K]	1018.0[ch]	48991.086[MHz]	8.271 [km/s]	34.298[ch]	0.686 [MHz]	4.198 [km/s] 46.469 [K*km/s]



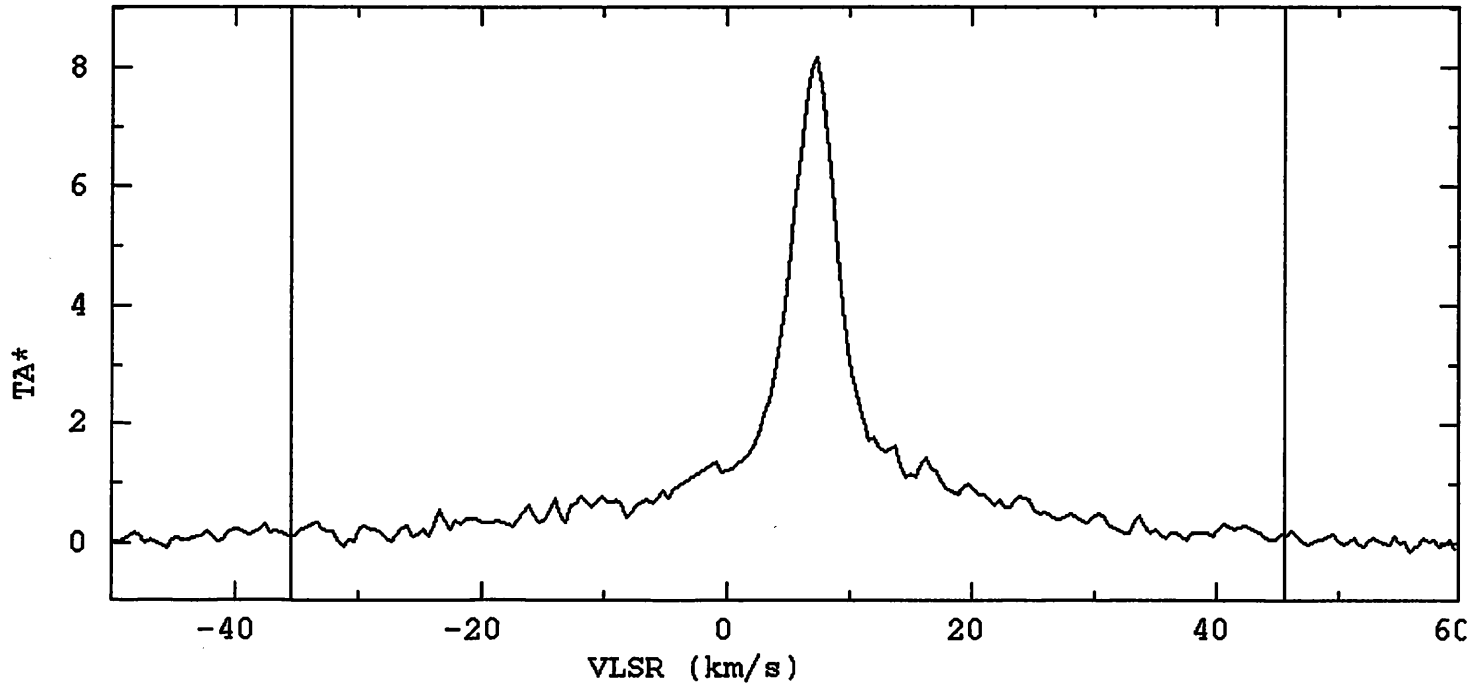
ORI-IRC2

Comments HCO+ 1-0
 Spectrum-id = 00011
 Ref. coordinate = RA,DEC
 X offset = +00d00'00.0"
 Y offset = +00d00'00.0"
 Center freq. = 89.163523(GHz)
 r.m.s = 0.126(K)
 Baseline order = 01

ORIVIII

: DATE(M D Y) = 01 15 90
 : P.A. = 0.000d
 : RA = +05h32m47.0s : l = 208.993D
 : DEC = -05d24'23.0" : b = -19.384D
 : AOS-W
 : Integ time = 00h04m20s
 : Scaling factor = 1.00

no.	peak T		x of peak		half width		integ. int.
1	8.172[K]	1218.0[ch]	89189.016[MHz]	7.357 [km/s]	10.789[ch]	1.370 [MHz]	4.604 [km/s] 82.997 [K*km/s]



ORI-IRC2

Comments HCO+ (1-0)
 Spectrum-id = 00012
 Ref. coordinate = RA,DEC
 X offset = +00d00'00.0"
 Y offset = +00d00'00.0"
 Center freq. = 89.188523(GHz)
 r.m.s = 0.101(K)
 Baseline order = 01

ORIVIII

: DATE(M D Y) = 01 15 90
 : P.A. = 0.000d
 : RA = +05h32m47.0s : l = 208.993D
 : DEC = -05d24'23.0" : b = -19.384D
 : AOS-H
 : Integ time = 00h08m40s
 : Scaling factor = 1.00

no.	peak T		x of peak		half width		integ. int.
1	5.753[K]	997.0[ch]	89189.062[MHz]	7.182 [km/s]	73.434[ch]	1.469 [MHz]	4.937 [km/s] 50.344 [K*km/s]

